

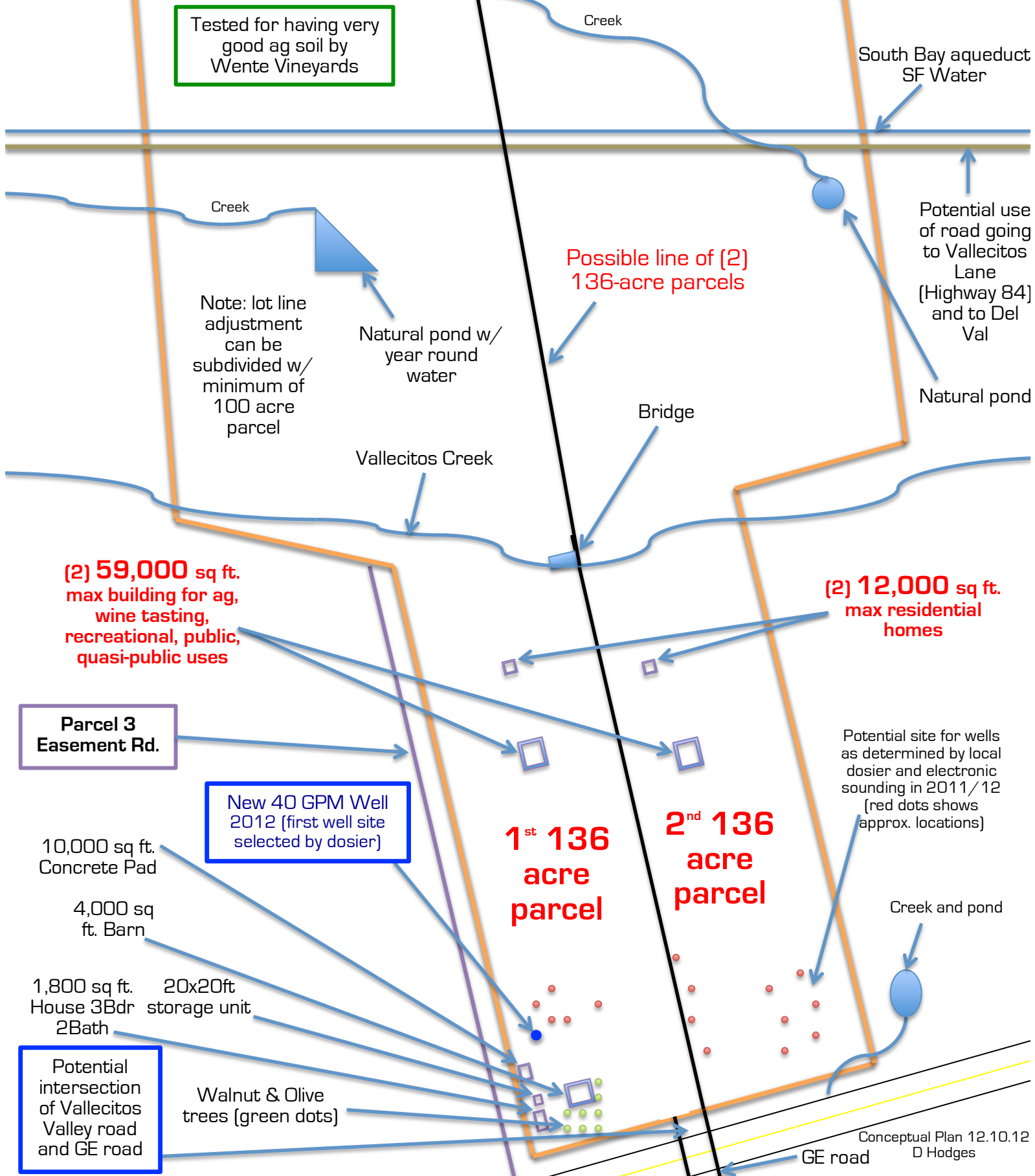
Vallecitos Valley – 7010 Vallecitos Road, Sunol CA

Conceptual Plan 12.10.12

Two 136 acre parcel with Lot Line adjustment

San Antonio Reservoir

Tested for having very good ag soil by Wente Vineyards



(2) 59,000 sq ft. max building for ag, wine tasting, recreational, public, quasi-public uses

(2) 12,000 sq ft. max residential homes

Parcel 3 Easement Rd.

New 40 GPM Well 2012 (first well site selected by dosier)

1st 136 acre parcel

2nd 136 acre parcel

10,000 sq ft. Concrete Pad

4,000 sq ft. Barn

1,800 sq ft. House 3Bdr 2Bath

20x20ft storage unit

Potential intersection of Vallecitos Valley road and GE road

Walnut & Olive trees (green dots)

Potential site for wells as determined by local dosier and electronic sounding in 2011/12 (red dots shows approx. locations)